

## Paceform Permanent Formwork System

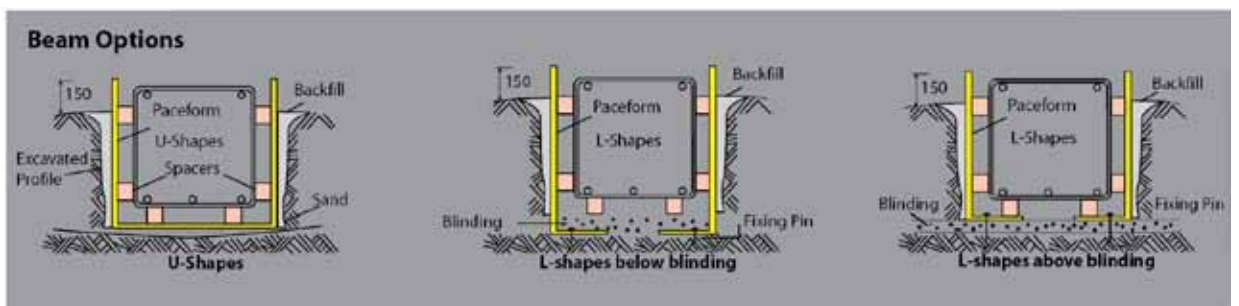
Paceform is a steel mesh reinforced polyethylene shuttering system for use in foundations.

Lightweight and easy to use, Paceform can save time and money compared with traditional methods.

- Supplied preformed to specific requirements
- Can eliminate blinding concrete
- Possible to reduce excavation width and therefore spoil removal
- Quick to install, speeding up the construction process
- No need to remove the formwork – one less activity
- Full take-off/scheduling service available
- Site support can be provided



Paceform can be supplied as 'U' shapes to eliminate the blinding concrete, or as 'L' shapes to the sides only. This option may prove more economical on wider sections.



# Installation Details

Excavate foundations to correct line and depth. Where the base has sharp projections, a layer of compacted sand will help prevent damage to the Paceform. The trench width should be considered in relation to safe working, but it should be possible keep this to a minimum as no formwork props are required.

Position the Paceform units using a 100mm overlap which can be secured by tying wire. Where beams abut deeper bases, the side can be easily cut to suit. Tape can be used to seal any gaps that might allow grout loss.

After fixing all units, the reinforcement can be positioned, ensuring that sufficient spacers are used to maintain the cover. The trench can then be backfilled using suitable material, and taking care not to cause too much distortion.

If Paceform is to be used without the support of the ground, a system of ties can be introduced provide stability. Please ask for guidance on this.



For more information, please contact your local depot...

## Scotland

### BRC Newhouse

Tel: 01698 723343  
Fax: 01698 833894  
Email: [sales@scotland.brc.ltd.uk](mailto:sales@scotland.brc.ltd.uk)

## North East

Tel: 01335 381166  
Fax: 10325 381780  
Email: [sales@northeast.brc.ltd.uk](mailto:sales@northeast.brc.ltd.uk)

## Midlands

Tel: 01623 555111  
Fax: 01623 440932  
Email: [slaes@midlands.brc.ltd.uk](mailto:slaes@midlands.brc.ltd.uk)

## Wales & West

Tel: 01633 280816  
Fax: 01633 283469  
Email: [slaes@walesandwest.brc.ltd.uk](mailto:slaes@walesandwest.brc.ltd.uk)

## South East

### BRC London

Tel: 020 7474 1800  
Fax: 020 7474 8686  
Email: [sales@southeast.brc.ltd.uk](mailto:sales@southeast.brc.ltd.uk)

## South West

### BRC Plymouth

Tel: 01752 894660  
Fax: 01752 896761  
Email: [sales@southwestbrc.ltd.uk](mailto:sales@southwestbrc.ltd.uk)

## South

### BRC Southampton

Tel: 01794 521158  
Fax: 01794 521154  
Email: [sales@south.brc.ltd.uk](mailto:sales@south.brc.ltd.uk)

[www.brc.ltd.uk](http://www.brc.ltd.uk)