



For All Your Requirements Contact Your Local Depot

Scotland

BRC Newhouse
Tel: 01698 732343
Fax: 01698 833894
Email: scotland.sales@brc.ltd.uk

North East

Tel: 01325 381166
Fax: 01325 381780
Email: northeast.sales@brc.ltd.uk

North

Tel: 01226 730330
Fax: 01226 771797
Email: north.sales@brc.ltd.uk

Midlands

Tel: 01623 555111
Fax: 01623 440932
Email: midlands.sales@brc.ltd.uk

Wales & West

Tel: 01633 280816
Fax: 01633 283469
Email: walesandwest.sales@brc.ltd.uk

South East

BRC London
Tel: 020 7474 1800
Fax: 020 7474 8686
Email: southeast.sales@brc.ltd.uk

South West

BRC Plymouth
Tel: 01752 894660
Fax: 01752 896761
Email: southwest.sales@brc.ltd.uk

South

BRC Southampton
Tel: 01794 521158
Fax: 01794 521154
Email: south.sales@brc.ltd.uk

www.brc.ltd.uk

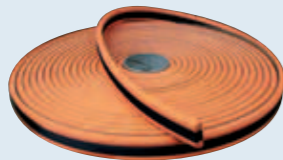


Waterproofing

Specialist supplier of construction solutions

BRC Waterproofing Solutions

BRC can supply an extensive range of waterproofing products and systems to suit most requirements, all of which are supported by our technical team.



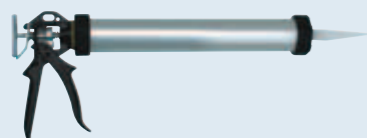
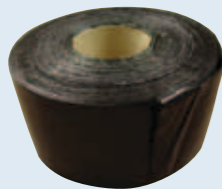
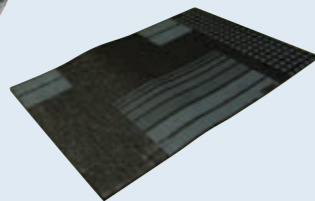
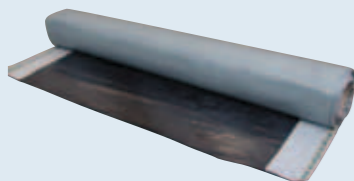
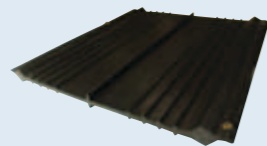
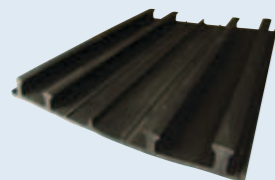
Contents

Hydrophilic Waterstops / Injection Hose Systems

- Page 3 Bentorub
- Swellseal
- Dualeal Waterstop

PVC Waterstops

- Page 4 Extaseal External
- Intaseal Internal
- Extaseal Construction Joint
- Intaseal Construction Joint
- Extaseal Expansion Joint
- Intaseal Expansion Joint
- Preformed Junction Pieces
- Hot Knife & Jig



Waterproofing Membranes & Ancillary Waterproofing Products

- Page 5 Dual Seal Membrane
- Bitusheet XL
- Bitusheet SBS Projection Board
- Page 6 Bitusheet Primer
- Bitusheet Primer HPS
- Bitusheet XL Tape
- Bitusheet Double Sided Tape
- Dual Seal Mastic
- Dual Seal Granules
- Page 7 Swellseal Mastic
- Cartridge Gun's
- Gas Barriers
- Waterproof Coatings / Repair Products / Sealants

Bentorub

Bentorub is a green, flexible hydrophilic bentonite strip for the sealing of construction joints in concrete. It is made from natural bentonite clay and synthetic rubber. Bentorub is designed for sealing construction joints, cold joints and working joints in concrete, around pipe penetrations, in sewer joints, against slurry walls and sheet piling, etc.



Bentorub has a proven track record in water treatment plants, water purification plants, underground parking lots, water reservoirs, swimming pools, water tanks, metro-works and other concrete structures subject to high water pressure up to 8 bar. The strip can be easily installed by nailing (4 to 5 nails per metre) or glueing with Contact Adhesive, Swellseal Mastic or Bentoglu. It is recommended to protect the Bentorub strip using the Bentosteel fixing cage.

Profile size 25mm x 20mm. Roll size 5m. WRAS Approved.

We also supply **Bentorub Salt** especially manufactured to be used in areas where salt or brackish water is present. **Infiltra Stop, Bentotoject and Bentotoject Salt.**

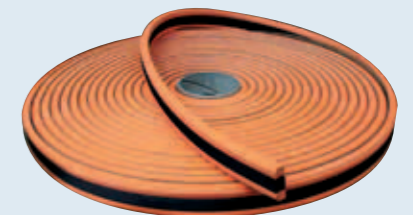
Description	Size
Bentorub	Section 20mm x 25mm. Roll 5m
Bentosteel Steel Fixing Cage	1m Length. 30 Pieces Per Pack
Bentoglu	310ml Cartridge
Swellseal Mastic	310ml Cartridge
Swellseal Mastic	600ml Sausage

Swellseal Joint

Swellseal Joint is a co-extruded, vulcanised hydrophilic rubber strip used primarily for sealing joints in pre cast elements. It can also be used for sealing construction joints, pipe penetrations and joints in underground pre-cast elements / structures etc. The ridged finish ensures a good adhesion to concrete. Swellseal Joint can be easily installed by nailing (4 to 5 nails per metre) or glueing with Swellseal Mastic / Contact Adhesive in horizontal applications. Profile size 25mm x 7mm. Roll size 10m.

We also supply **Swellseal 3V / 8V.**

Description	Size
Swellseal Joint	Section 7mm x 25mm. Roll 10m
Contact Adhesive	1 Litre Tin
Swellseal Mastic	310ml Cartridge
Swellseal Mastic	600ml Sausage



Dualeal Waterstop

Dual Seal Waterstop is a bentonite / HDPE based waterstop which reacts in contact with water by swelling to form a watertight seal in concrete structures. It can be installed directly onto scabbled surfaces and will swell into honeycombing of concrete or voids up to 12mm deep. Dual Seal Waterstop requires a minimum of only 25mm cover so can be place beyond the outer layer of rebar to protect this layer, rather than be placed in the centre of the construction joint in the traditional manner. Changes of direction and end joints are simply achieved by butting together, no welding or adhesives are required.

Dual Seal Waterstop has been independently tested up to 30 metre head of water, and has full WRC approval for use with potable water. Dual Seal Waterstop can be applied to green concrete and in damp conditions. Profile size 25mm x 7mm. Roll size 8m.

We also supply **Superstop** and **Hydrotite.**

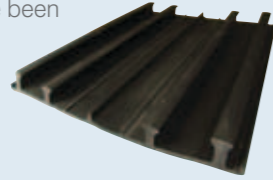


Description	Size
Dual Seal Waterstop	Section 7mm x 25mm. Roll 8m
Swellseal Mastic	310ml Cartridge
Swellseal Mastic	600mm Sausage

Extaseal External Waterstops

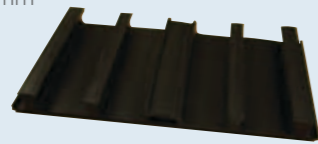
Extaseal External PVC Waterstop is a high performance, heavy duty profile waterstop specifically developed to seal joints in concrete structures at the outside surface thus protecting the reinforcing steel against any corrosion attack, in addition to providing a totally watertight seal.

Extaseal External Waterstops have been independently tested to provide a totally effective water barrier up to 27m head in construction, expansion and kicker joints in



Extaseal Construction Joint Waterstop

To be used and placed externally to the structure such as on the underside of a slab or external wall joint. The standard width is 250mm however 200mm is available on request.

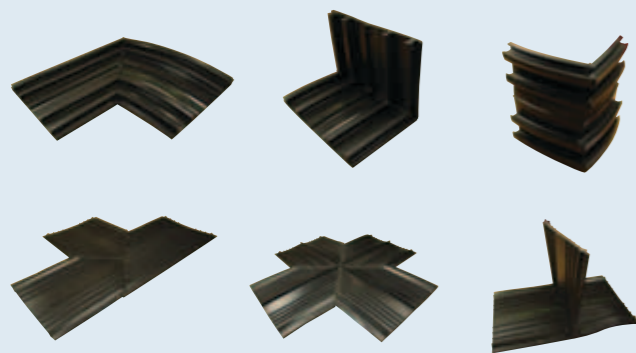


Extaseal Expansion Joint Waterstop

To be used and placed externally to the structure such as on the underside of a slab where an expansion joint is required. To allow for accurate placement, this waterstop features a centrally formed area to place fillerboard or other expansion joint material. The standard width is 250mm, however 200mm and 300mm widths are available on request.

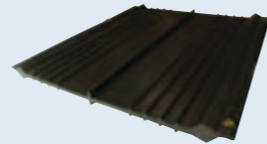
Description	Size
Extaseal CJ External Waterstop 250mm	Roll 250mm x 10m
Extaseal EJ External Waterstop 250mm	Roll 250mm x 10m

We also supply
PVC Waterstop Preformed Junction Pieces



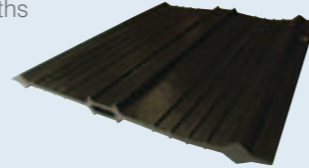
Intaseal Internal Waterstops

Flat Dumbbell and Centrebulb Internal Waterstops have been specifically developed, with their unique rib and end bulb profiles to provide a totally effective water barrier when cast centrally within concrete wall and floor joints. Flat Dumbbell and Centrebulb Internal Waterstops have been independently tested to withstand ingress of water, up to 27m head in construction and expansion joints in water retaining and excluding structures. All Intaseal Waterstops are WRAS Approved.



Intaseal Construction Joint Waterstop

To be used and placed internally within a slab / wall construction joint. The standard width is 250mm, however 150mm and 200mm widths are available on request.

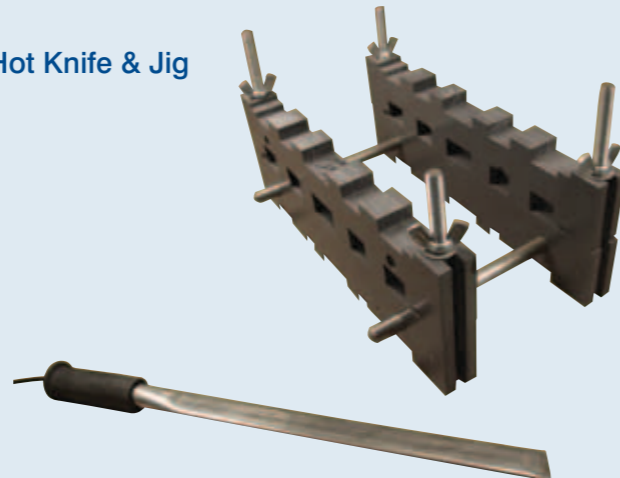


Intaseal Expansion Joint Waterstop

To be used and placed internally within a slab / expansion joint. To allow for expansion / movement this waterstop features a 'centrebulb'. The standard width is 250mm, however 150mm, 200mm and 300mm widths are available on request.

Description	Size
Intaseal CJ Flat Dumbbell Internal Waterstop 250mm	Roll 250mm x 15m
Intaseal EJ Centrebulb Internal Waterstop 250mm	Roll 250mm x 15m

Hot Knife & Jig



Dual Seal Membrane

Dual Seal Membrane is a premium, high performance, self swelling and self healing waterproofing membrane comprising of a tough, high density polyethylene membrane sheet laminated to 4kg/m² of Bentonite granules. It requires no primer, no protection board or heat welding. Dual Seal can be installed directly onto green concrete, immediately as shutters are struck and at any temperature from -30°C to +55°C ensuring suitability for all conditions and no lost installation time. The simple methods of installation allow easy and rapid fixing by non specialist labour saving time and money. Dual Seal is WRAS and BBA Approved for use with potable water. For areas where saline, alkaline or acidic water is found or expected, Dual Seal Saltwater is available. Roll size 8.93m² (1.22m x 7.32m). Roll thickness 5mm.

We also supply **Dual Seal Membrane LG**.

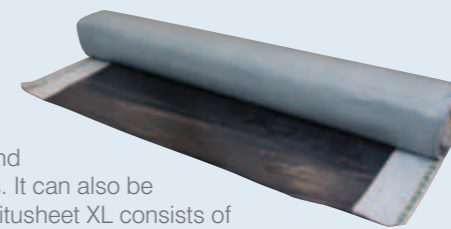


Description	Size
Dual Seal Membrane	Roll 1.22m x 7.32m
Bitusheet XL Tape 100mm	Roll 100mm x 20m

Bitusheet XL

Bitusheet XL is a high performance self adhesive membrane used below ground for the tanking of basements and waterproofing of sub structures. It can also be used as a ground floor DPM. Bitusheet XL consists of self bonding polymer modified bitumen which is covered on one side by a tough cross laminated polythene film and protected on the other side by a release sheet. Use with Bitusheet Primer and protection boards. Roll size 20m² (1.05m x 19.05m). Roll thickness 1.5mm.

We also supply **Bitusheet HPS**.

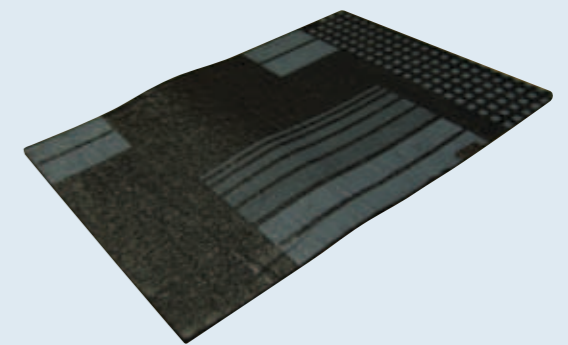


Description	Size
Bitusheet XL	Roll 1.05m x 19.05m
Bitusheet Primer	5 Litre Tin
Bitusheet Primer	25 Litre Tin
Bitusheet XL Tape 100mm	100mm x 20m
Bitusheet XL Tape 150mm	150mm x 20m
Bitusheet XL Tape 300mm	300mm x 20m

Bitusheet SBS Protection Board

Bitusheet SBS Protection Board is a tough, flexible polymeric board designed for both horizontal and vertical applications to protect waterproofing membranes against abrasive backfill materials, and poured concrete. The board should be butt jointed and supported during backfilling. Bitusheet Double Sided Tape should be used to spot bond the protection board to the membrane. The joints should be staggered and also staggered over the membrane laps. Available in 1.5mm or 3mm thickness. Sheet size 2m x 1m.

We also supply **Bituminous Protection Board, Walldrain, Slabdrain and Roofdrain**.



Description	Size
Bitusheet SBS Protection Board 1.5mm	2m x 1m x 1.5mm
Bitusheet SBS Protection Board 3mm	2m x 1m x 3mm

Bitusheet Primer

Bitusheet Primer is a one part bituminous solution used for sealing porous concrete surfaces to promote adhesion of self-adhesive waterproofing membranes such as Bitusheet XL. Available in 5 litre and 25 litre drums.



Description	Size
Bitusheet Primer	5 Litre Tin
Bitusheet Primer	25 Litre Tin

Bitusheet Primer HPS

Bitusheet Primer HPS is a high performance primer designed for use in damp or difficult concrete conditions and can be used in temperatures as low as -10°C.



Description	Size
Bitusheet HPS Primer	5 Litre Tin
Bitusheet HPS Primer	25 Litre Tin

Bitusheet XL Tape

Bitusheet XL Tape is an adhesive bitumen based tape used for reinforcing all internal and external edges, intersections and roof expansion joints. The 100mm width is used to seal the overlaps of Dual Seal Membrane and also protect the cut end overlaps of Bitusheet Gas Barrier Membrane. The tape is available in standard roll widths of 100mm, 150mm and 300mm. Roll length 20m.



Description	Size
Bitusheet XL Tape 100mm	Roll 100mm x 20m
Bitusheet XL Tape 150mm	Roll 150mm x 20m
Bitusheet XL Tape 300mm	Roll 300mm x 20m

Bitusheet Double Sided Tape

A double sided adhesive bitumen tape which has been developed for fixing protection boards to membranes; sealing overlaps between polythene sheets and for joining laps of DPC's. The tape is available in standard roll widths of 100mm, 150mm and 300mm. Roll length 10m.



Description	Size
Double Sided Bitumen Tape 100mm	100mm x 15m
Double Sided Bitumen Tape 150mm	150mm x 15m
Double Sided Bitumen Tape 300mm	300mm x 15m

Dual Seal Mastic

A hydrophilic mastic for use with Dual Seal Membrane to form a 45° fillet at internal corners, around pipe entries and penetrations. It is also used for filling voids, tie holes and honeycombing prior to installation of the Dual Seal Membrane. Supplied in 19 litre pails.



Description	Size
Dual Seal Mastic	19 Litre Drum

Dual Seal Granules

Pure sodium bentonite in granular form which reacts when in contact with water and forms an impervious gel. It is used in conjunction with Dual Seal Waterproofing Membrane to form a fillet at wall to floor transitions and penetrations through horizontal surfaces. Supplied in 22.7kg bags.



Description	Size
Dual Seal Granules	22.7kg Bag

We also supply **Contact Adhesive**, **One Part Polyurethane Sealant** and **Two Part Polysulphide Sealant** in gun grade or pouring grade.

Swellseal Mastic

Swellseal Mastic is a one-component, polyurethane based, solvent free, hydro swelling mastic, supplied in cartridges and aluminium sausages. It is used for the sealing of construction joints and around pipe penetrations. It can also be used for the fixing of waterstops. Swellseal Mastic is a flexible system that can be applied to rough or smooth joints in concrete, PVC, HDPE, steel, etc and will expand up to 350% its original volume when in contact with water. Available in 310ml cartridges for mastic guns or 600ml sausages for a caulking gun. WRAS Approved.



Description	Size
Swellseal Mastic	310ml Cartridge
Swellseal Mastic	600ml Sausage
310ml Cartridge Gun	1 Piece
600ml Sausage Gun	1 Piece

Cartridge Gun

Metal skeleton cartridge gun for extruding 310 cc cartridges such as Swellseal Mastic, Aquatek Mastic, Bentogluce etc.



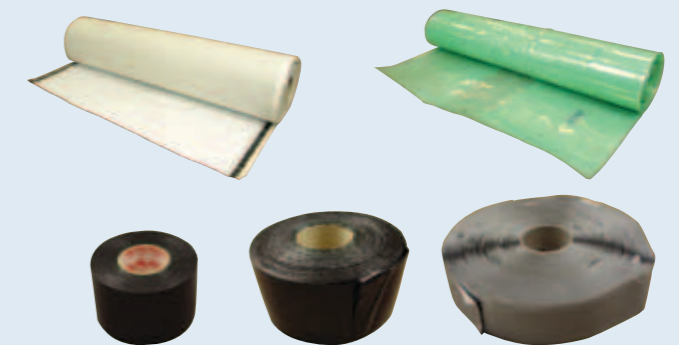
Sausage / Caulking Gun

Metal caulking gun for extruding 600 cc sausages such as Swellseal Mastic, Aquatek Mastic etc.

Description	Size
310ml Cartridge Gun	1 Piece
600ml Sausage Gun	1 Piece

Gas Barrier Membranes

We also supply a comprehensive range of gas barriers and associated products, as well as being able to offer a design / installation service.



Waterproof Coatings / Repair Products / Sealants

We also supply **Bitusheet AC**, **Denepur EM**, **Aquatek Super XA**, **Aquatek Elastic 2C**, **Aquatek Plug / Plug XF**, **Omnitek Microconcrete**, **Pipe Plug Kit**, **Crack Injector Kit**, **Colflex HN**, **Multitek Adhesive**, **DenePu EM Balcony Repair System**, **Omnitek Micin**, **Flexcrete 851**, **Tiefill**, **Cemprotect Elastic**, **Fastfill**, **Polyurethane** and **Polysulphide Sealants**

